

CJCPMUNC

2026



CRISIS FANTASY

TABLE OF CONTENTS

1. Letters From the Dais.....

2. Letter From Santa.....

3. Notes on Procedure.....

4. Clarifications About This Crisis.....

5. Example Crisis Notes.....

6. INTRODUCTION.....

7. Timeline of Events.....

8. Questions to Consider.....

9. Positions.....

LETTER FROM THE CHAIR

Hello Delegates,

My name is Aiman Asraree and I'm so happy to be chairing the fantasy crisis committee for CJCPMUNC! A little about me: I'm a junior in high school and I love Model UN. I've been doing Model UN since 6th grade but was unable to go to any competitions until 8th grade due to the pandemic. I have always loved public speaking and addressing concerns the world has either turned a blind eye to or is unable to solve. I've also been a member of other school clubs like FBLA, DECA, and HOSA.

Outside of school and MUN, I also love watching TV shows and reading, especially thrillers that keep me hooked until the very last page. Stories whether from books, shows, or history have always inspired me to think about the "what ifs" of the world, and that's part of what led to creating this committee. I wanted a topic that wasn't just about politics, but also about imagination, something that combines my love of storytelling with the excitement of global debate. When we were brainstorming this committee, we wanted something totally different from the usual topics and that's how *Operation North Pole* was born. We thought, what if a childhood legend like Santa Claus wasn't just a story, but actually tied into the big global questions we debate in Model UN? Mixing something magical with international politics gave us the chance to create a committee that's both fun and challenging. It's designed to let you be creative, think outside the box, and approach diplomacy in a way you've probably never done before.

Remember: while the topic may sound magical, the issues are very real. This committee will test your ability to balance imagination with strategy, diplomacy with competition, and creativity with problem-solving. Don't be afraid to think big, but also stay sharp because every decision you make could determine the fate of the world (and maybe even the holidays themselves).

I look forward to watching your debates unfold and seeing how you handle this unprecedented challenge. The North Pole's future, and the world, is in your hands.

Your chair,
Aiman Asraree
Chair Crisis Fantasy
(aimanasraree@cjcollegeprep.org)

LETTER FROM THE VICE-CHAIR

Hello Delegates,

My name is Aadit Gandhi, and I can't wait to see you guys at our fantasy crisis committee for CJCPMUNC! I'm currently a senior at CJCP, and I love doing public speaking competitions, so Model UN was an easy pick for me. I've been doing this for 3 years, won a lot more awards, and now I can't wait to see all of you do the same. Model UN is great for the ability for all of you guys to have an equal opportunity to learn about global issues, and project your ideas to many, many like-minded people. The collaboration is unreal, how we all work with each other, and WE are gonna find out why Santa isn't being Ol' Jolly Saint Nick.

Outside of school you can find me at libraries, senior homes, and schools working with various organizations, trying to bring more opportunities like CJCPMUN to kids. When I'm not running around NJ, I'm at the gym or at Ironpeak playing volleyball with friends. At home I watch movies and play music (or listen if I'm tired). I love interacting with new people, trying new things, and I can't wait to see some great ideas from you guys.

As this committee goes on, you're gonna have fun, gonna make friends, and gonna think of crazy ideas that might seem impossible for countries to carry out. But that's fine. I want you guys to be open-minded because this is a fantasy crisis; if there's a solid framework, logical clauses, then anything is possible. The Crisis aspect is the best part of this committee, your work in the backrooms will be more important than anything, I'm really looking forward to seeing fun crises happen throughout the day.

Fun fact, I actually got kidnapped from the committee as a crisis last year, and the delegates had to all work together to bring me back (they did), so I'm looking for something to top that this year. All in all, we wish you guys the best of luck! If you need help you are talented, good at acting, and a very extra vice chair (and chair!) here to help so don't be afraid.

Your vice chair,
Aadit Gandhi
(aaditgandhi@cjcollegeprep.org)

NOTES OF PROCEDURE

1. CJCPMUN will be utilizing Google Docs and Gmail for the conference. For any questions regarding this conference please contact us at (EMAIL).
2. Delegates will communicate in-room with paper notes.
3. CJCPMUN uses Parliamentary Procedure (often abbreviated as Parli Pro) to run committees. A Google search will give you more than enough information on how this is used in Model UN, and any other questions can easily be addressed in committee.
4. CJCPMUN has a **zero-tolerance policy regarding bullying, offensive remarks, harassment, discrimination, or anything of the sort**. Model UN should be a fun activity for delegates to participate in and no one should feel excluded at any point during the weekend. If at any point the Secretary Generals are notified of any violation of this policy, the delegate will be contacted and the issue will be discussed, potentially resulting in expulsion from the conference or disqualification from awards. In general, if you think even for a second that something would offend someone, do not do, or say that thing.
5. Profanity is prohibited.
6. Pre-writing is defined as any notes or directives written outside of committee time and is strictly prohibited. Delegates are allowed to bring research into the committee, but not pre-written notes or papers. Engaging in pre-writing will result in immediate disqualification from award consideration.
7. CJCPMUN Crisis Committees are **PAPER-ONLY**. We are utilizing a two-pad system for crisis notes, delegates will be expected to **arrive with 2 standard legal pads**, post-it notes, and additional scratch paper. For any questions, please contact the secretariat at (aminaandha@cjcollegeprep.org and devinsanghvi@cjcollegeprep.org)
8. If you need to use the restroom during committee, let the chairs know

CLARIFICATIONS ABOUT THIS CRISIS

This committee will adopt a format similar to a United Nations Security Council committee. There will be full crisis elements in the first half of the competition to stimulate dynamic discussions and decision-making with a focus on advocating for interests by subterfuge, and planning.

We will end these crisis elements, urging all parties to collaboratively draft a resolution, reflecting on the outcomes and insights from the day's activities. This structure is designed to provide a comprehensive experience, combining the urgency of crisis response with the collaborative effort of resolution drafting.

When planning your crisis arcs, focus on gaining leverage in future negotiations instead of trying to solve every problem in a grand display.



NOTE FROM SANTA

To our Great World Leaders,

For centuries, I have quietly watched the story of humankind from shadow and worshiped it in song. From candlelit cathedrals to crowded city streets, from the whispers of winter solstice fires to the cheer of Christmas morning, my presence has always been felt but rarely acknowledged. I have never needed recognition. My work has always spoken for itself.

And yet here we are. The secrecy I once guarded has been pierced, not by malice, but by the unstoppable wave of progress, curiosity, and ambition. What was once myth is now fact, and what was once whispered in faith is now tangled in politics. I never expected to write this letter, but the time has come to speak plainly.

First, let me assure you: those caught up in the recent “accident” are safe and under the care of my elves. They are enjoying hot cocoa and stories by the fire as I write this. But your world has not reacted with the same warmth. I see warships at my borders, drones above my skies, and governments scrambling to measure what should not be measured. I ask you to pause, to breathe, and to remember what season we are in.

I do not deny my methods are unconventional. I do not deny I have seen more than any mortal should. But I have never sought control. I see only balance, only belief. And belief, once broken, is not easily restored. That is why I ask you now: let Christmas remain Christmas. Let its magic endure in faith, not in laboratories or headlines.

Now, I have always tried to keep my tone jolly. But as one of your poets once said, “Hold up, wait a minute, y’all thought I was finished?” If you think Christmas ends because the North Pole has been revealed, you are sorely mistaken. The work continues. It *will* continue. The joy of giving, the lessons of kindness, the wonder in a child’s eyes are *all* non-negotiable.

We are at a crossroads. You may choose suspicion and force, or you may choose cooperation and care. I stand ready for the latter. Because whether cloaked in myth or standing before you in truth, my mission has not changed.

I await your answer. The sleigh is ready, the lists are written, and the children are waiting.

With hope, with resolve, and with love,

Santa Claus

Background

In the year 2050, Santa Claus is a relic of the past. Once an icon of innocence and wonder, he now lingers only in advertisements and nostalgic memory. The world has moved on. The red-suited man who once symbolized joy and generosity has been replaced by algorithms and delivery drones. In every mall across the world, the once-coveted Santa chair sits empty, gathering dust beneath flickering holiday lights. The belief in magic faded, replaced by the unrelenting advance of technology, surveillance, and logic. Parents now openly take credit for gifts once attributed to a myth. Children, raised on fact-checking software and facial recognition, see no reason to believe in reindeer flight or magical gift deliveries.

For decades, Santa Claus had been written off as myth, a comforting illusion for children in an age before transparency and truth verification. Yet, as humanity grew more advanced, the line between the fantastical and the possible began to blur. Machines began doing the work of magic. Artificial intelligence could predict human behavior with eerie precision. And still, somewhere deep beneath the Arctic ice, something ancient waited.

Discovery of the Anomaly

The illusion of myth shattered when an unidentified satellite entered Earth's atmosphere and crash-landed in the high Arctic. The United States Space Surveillance Network tracked its descent, believing at first it was debris, perhaps a defunct probe or an unregistered private satellite. But the readings didn't match anything known. The object emitted a pulse of low-frequency energy that disrupted global positioning systems within a 1,000-kilometer radius. Within hours, intelligence agencies scrambled to locate the crash site.

When an American reconnaissance team finally reached the coordinates, what they found defied explanation. Buried deep beneath the ice was a massive object resembling a sleigh which was metallic, humming with a strange energy field unlike anything human science had ever recorded. Its composition was neither steel nor any known metals. As military engineers struggled to make sense of it, their instruments began to malfunction.

Word of the discovery spread quickly among the intelligence community. Within days, Russia dispatched a secret Arctic research unit under the guise of a meteorological expedition. By the time American teams established their base camp, Russian forces had already begun drilling from the opposite side of the polar ridge. Both sides unknown of the other's presence, though satellite images would later show two vast underground complexes growing closer and closer. Neither side was prepared for what they found next.

Discovery of the Anomaly Cont.

Slowly, word of the discovery began to leak beyond the initial circles of secrecy. What had started as a tightly controlled operation between the United States and Russia could no longer be contained. Intelligence fragments, intercepted communications, and anonymous reports began surfacing across Europe and Asia. Nations realized that both superpowers had deliberately concealed the existence of an underground civilization beneath the Arctic. Outrage followed. Accusations of deception and manipulation flooded the international stage, placing the United States and Russia in diplomatic hot water. Many countries demanded immediate transparency, condemning both powers for hoarding technology, data, and knowledge that could alter the course of humanity.

The North Pole Operation

Deep beneath the ice lay an entire subterranean metropolis. The city appeared to operate independently of external energy sources, powered instead by what researchers later dubbed “graviton reactors,” devices that manipulated gravity itself. The air was breathable and the temperature stable. Patrols soon encountered strange, reindeer-like creatures guarding the perimeter. Their eyes glowed faintly blue, and their antlers sparked with energy.

Most astonishing of all were the inhabitants, tiny peculiar beings, no more than a meter tall, with pointed ears. These were no mere legends. The elves, long dismissed as folklore, were real.

Santa was real.

And he had been watching.

For centuries, humanity had imagined the North Pole as a whimsical workshop of toy-making elves and reindeer. The truth was far more complex. The so-called “workshop” was, in reality, a highly advanced autonomous civilization, an economy that had quietly functioned beneath human society for centuries. Its energy grid drew from renewable sources unknown to science, possibly tapping into quantum fluctuations. Its logistics network rivaled the world’s largest corporations. Every package delivered, every Christmas wish granted, every list checked twice, all had been part of a seamless system of production, distribution, and data analysis beyond human capability.

Santa and the Global Economy

Economists apart of the UN who were briefed on the findings described the North Pole as an independent global actor, a hidden economy whose influence extended invisibly through trade patterns, manufacturing, and consumer psychology. The annual exchange of gifts, once dismissed as mere tradition, was found to have measurable effects on global markets. Increases in spending during the holiday season were not coincidental but subtly reinforced through data patterns originating from the North Pole's network. This "Christmas Effect" stabilized consumer confidence, mitigated economic downturns, and contributed to global happiness indices. In short, Santa's operation was not just folklore, it was infrastructure.

However, beneath this lurked troubling questions. Intelligence agencies uncovered evidence that the North Pole had been harvesting human behavioral data for centuries. The so-called "naughty or nice" list appeared to be powered by an elaborate surveillance system that drew information from satellites, smartphones, home assistants, and even biometric sensors. Every human act of kindness or cruelty, every purchase, every message, all of it fed into Santa's algorithm. Governments were horrified to realize that this data collection had outpaced even their own most secretive surveillance programs.

Further investigation revealed that Santa's sleigh, the object first discovered under the ice, was capable of faster-than-light travel through methods still unexplained by known physics. The implications for defense, transportation, and espionage were staggering. Yet, despite global interest in reverse-engineering the technology, every attempt to replicate or open the sleigh resulted in catastrophic failure. One Russian scientist described the sensation as "trying to open a dream."

Labor, Secrecy, and Ethics

Ethical concerns quickly followed. The elves, once thought to be joyful helpers, were revealed to be highly skilled workers operating within a rigid hierarchy. While some reports described their labor as voluntary and communal, others raised alarms about harsh working conditions, limited mobility, and an absence of personal freedoms. Attempts to communicate with them directly were often met with silence or cryptic warnings. One interpreter noted that the elves seemed to believe they were part of a larger obligation, that their labor maintained balance between worlds.

At the diplomatic level, the revelation of Santa's existence created an unprecedented crisis. The United Nations convened an emergency summit under the codename **Operation North Pole** to discuss how to address this discovery. Some nations argued for transparency, demanding that the truth be shared with the public. Others feared that revealing Santa's existence could trigger mass panic, religious conflict, or societal collapse. If humanity learned that an unseen power had been monitoring their every move for centuries, the psychological fallout could be catastrophic.

Meanwhile, global corporations and intelligence agencies raced to secure fragments of Santa's technology. Nations debated whether the North Pole should be classified as a sovereign entity, a corporate power, or an extraterrestrial civilization. Ethical questions multiplied: if Santa had been influencing the world economy, was he of joy and generosity or manipulative, subtly controlling human behavior for purposes unknown?

Political Dilemmas and the Question of Power

Beyond ethics lay power. Santa's ability to enter any home on Earth, bypassing borders, defenses, and surveillance, was an act that, by modern standards, constituted a violation of sovereignty on an unimaginable scale. For centuries, he had crossed international borders, breached private property, and evaded every form of detection. His operations ignored trade laws, environmental protocols, and labor regulations. To some, he was a rogue actor undermining the global order; to others, he was the invisible thread holding humanity together.

Santa's Intentions and the Uncertain Future

As delegates in the United Nations Restoration Council, you face an unprecedented challenge. The existence of a hidden civilization beneath the Arctic, led by a being humanity once called Santa Claus, has redefined the boundaries of science, ethics, and international law. The decisions you make will determine whether the world exposes, cooperates with, or attempts to dismantle the North Pole's operations.

Consider the implications: the surveillance of billions without consent, the violation of borders, the exploitation of unknown labor forces, and the fragile dependence of the global economy on one secretive power. Yet, also consider the potential benefits peace, stability, technological advancement, and the preservation of global happiness.

The truth about Santa Claus may be stranger than fiction, but it now stands as one of the greatest diplomatic and ethical dilemmas in human history. His intentions are unknown. His power is unmatched. His presence is undeniable.

Santa Claus is real.

And he is watching.



Crisis Note Examples/Definitions

Front room - The setting where delegates participate in debates with each other, write directives, and vote. Where delegates decide what the committee will do.

Back room - Private interactions between delegates and staffers are done through sending notes. Where delegates develop a personal story arc and have their character take actions.

Directive - A written set of directions on how the committee as a whole will respond to a conflict the front room has to deal with.

Crisis Note - An anonymous note giving backroom staff instructions on what action(s) a delegate's character will take. These can affect the front room but don't have to.

In the committee, there are two main components to a crisis committee that is different from a general assembly (GA). There is the front room where the collective committee as a whole must work together to write and pass directives to solve the issue at hand and address the actual crisis. It is important to represent your country and its stance on the main issue at hand to ensure that you are coming up with a solution to the crisis this committee is addressing.

However, in the backroom, each delegate acts as individuals shaping a new type of world, building power, and creating crises that can affect the front room. This is incredibly important for the development of solutions and different crises the dias may throw at you. Remember to burn your notes after you write them otherwise your plans may be revealed to the public.

Crisis Note Requirements

1. It is addressed to a character
2. It utilizes the character's resources
3. It contains direct, specific actions to be undertaken
4. It provides for how the actions will be undertaken

Crisis Notes

Crisis notes are notes written in character to fictional confidants. Backroom staffers will respond to these notes in character. If your note was well-written and detailed, your requests will likely be granted and your plans will largely succeed.

How does backroom affect your character arc?

First, you need to develop a character arc during the multiple committee sessions that will shape both your performance in the front room and backroom. Any action you take in the backroom has the possibility of directly affecting what is currently happening in the front room so keep that in mind.

Crisis Note Examples/Definitions Cont.

Front Room vs. Backroom

Front room

1. **Join Fernando Haddad's campaign**
 - a. Pledge full support due to the dire situation of instability in Brazil
2. **Establish claims on how money laundering is a big crisis and create solutions on a basic framework that can be passed**
 - a. Implement solutions like the subsidization of anti-money laundering technology.
 - b. Implement connections from the local and national levels to inventive banks to stop money laundering.
3. **Create a program to help people who are suffering from the Petrobras fallout in Brazil.**
 - a. Use economic aid to rebuild infrastructure by using a task force to gather info.

Backroom

1. **Then talk to Fernando Haddad and tell them how we need to reform Brazil together and make the nation better through my frontroom pans.**
 - a. Find info on Fernando through my corruption powers.
 - b. Send info to Fernando about his illegal stuff, if that's not enough fabricate evidence to get the criminal sentence reduced.
Framer Fernando.
2. **Star communication with crime lords around Brazil**
 - a. Blow up pipelines around Brazil to cause chaos.
3. **Gain more favor and power with the gangs.**
 - a. Run a drug empire via the gangs and use my social status to ward off the police.

Here are some examples of crisis notes you can write:

1. To my trusted assistant Wang Peng,

I have recently decided to enter into the casino business. Please use my funds to purchase a suitable building located near the Hong Kong International Airport to increase access for tourists. I understand that there might be some hesitation from the locals regarding foreign investment so I would also like you to release a statement to the public that the casino renovations and maintenance will employ hundreds of local Hong Kong residents during this time of extreme unemployment.

I would also like you to covertly reach out to one of my contacts in the criminal underworld that I have surely made through my various business dealings. Arrange a meeting with an international heroin dealer (under the guise of having dinner with an old friend) to discuss a possible smuggling operation to be run out of my casino, providing myself and the dealer with immense profits. Please inform me as to the results of these actions. Please burn this note after reading it.

-Vincent Lo

2. To Amy Duckworth, Special Reporter for the Warsaw Daily I, the delegate from Poland, would like you to leak an intelligence brief that determined that the Russians were responsible for the recent hack of our nuclear power plant because I believe that the Russians are the only country with motive and ability to attack our infrastructure. Moreover, I want to leak this intelligence report from the Polish government 3 to force my allies to take action against Russia, this is in line with my government policy under the current government, which is quite anti-Russian.

Country Stances

1. **Russia**
 - a. Russia's stance will center on maintaining global influence and asserting control over scientific and military dimensions of the crisis. Leveraging its extensive bioweapons history and secretive research programs, Russia would emphasize self-reliance, information control, and strategic containment. The Kremlin will promote limited cooperation, particularly with allies like China, while quietly working to secure key research assets or vaccine data. Domestically, strict martial law and surveillance would be implemented to prevent internal chaos. Globally, Russia would likely challenge Western dominance in managing the outbreak, framing its response as a defense of sovereignty and stability against U.S.-led militarization.
2. **USA**
 - a. The United States would adopt a militarized and technology-driven approach to controlling the outbreak, prioritizing security and containment over transparency. It would likely deploy its military to enforce quarantines, secure research sites, and retrieve vital data—potentially even through covert operations. The U.S. would push for a global coalition under its leadership, emphasizing vaccine development through private biotech firms. However, internal panic, political division, and the risk of misinformation would complicate domestic stability. While advocating international collaboration, the U.S. would primarily focus on protecting its borders and ensuring its economic and strategic interests remain intact.
3. **China**
 - a. China would favor a centralized, authoritarian response to the outbreak, relying on surveillance, censorship, and rapid mobilization of resources. With strong manufacturing capacity and a history of large-scale crisis management, China could lead vaccine and medical supply production, but it would tightly control information dissemination. Beijing would likely seek to expand its influence through aid diplomacy, offering medical support to Belt and Road partners in exchange for loyalty. However, international skepticism regarding transparency could undermine global trust. Domestically, China's top-down governance would enable swift containment, though it might mask the true scale of infection.
4. **Vatican City**
 - a. The Vatican City, while lacking military or economic power, would wield immense moral influence in the global crisis. It would call for unity, humanitarian aid, and ethical conduct in the distribution of medical resources. The Holy See would likely condemn the militarization of the crisis and urge world leaders to protect the dignity of human life, regardless of national interest. Working through Catholic charities and global relief networks, the Vatican would focus on aiding vulnerable populations and promoting transparency and compassion. Its diplomatic neutrality would allow it to mediate between conflicting states, framing the crisis as both a spiritual and moral test for humanity.
5. **Turkey**
 - a. Turkey would position itself as a regional stabilizer and strategic military hub between Europe and the Middle East. With its strong armed forces and advanced biocontainment units, Turkey could control cross-border movement and safeguard regional trade routes. Ankara might also leverage its influence in NATO while maintaining ties with Russia and China, ensuring flexibility in alliances. Domestically, Turkey's government would use the crisis to consolidate control, enforce strict quarantines, and manage public messaging. Internationally, it would aim to present itself as a bridge between East and West, offering logistical and military support in exchange for political leverage.

Country Stances

Saudi Arabia

Saudi Arabia would prioritize protecting its oil infrastructure and ensuring internal stability. The Kingdom's vast financial reserves and private biotech investments would give it the ability to fund vaccine research and containment operations.

While publicly supporting global cooperation, Saudi Arabia would secretly aim to maintain control over critical resources, using oil as leverage in diplomatic negotiations. The government's tight internal security network would enforce quarantines with precision, though rumors of bioweapon research could strain trust with Western allies. Saudi Arabia's dual strategy of humanitarian aid and quiet opportunism would reflect its intent to emerge stronger geopolitically.

Finland

Finland would focus on scientific innovation and humanitarian collaboration, leveraging its world-class healthcare system and technological expertise. The Finnish government would emphasize transparency, data-driven decision-making, and international research cooperation. As a member of the European Union and NATO partner, Finland would push for a coordinated regional response emphasizing containment and public trust. Domestically, strong social infrastructure would help minimize panic, while the country's geographic isolation could make it a potential refuge. Finland's approach would balance ethical responsibility with quiet preparedness, offering research support to allies while safeguarding national interests.

Denmark

Denmark would take a proactive yet pragmatic approach, emphasizing transparency, community health, and regional cooperation through the EU and Nordic Council. Its robust healthcare system and trust-based governance model would enable swift containment efforts and efficient vaccine rollout. Denmark's emphasis on open communication might make it a model for democratic crisis management, though it would still impose strict travel restrictions. Internationally, it could support global humanitarian aid and research funding, especially through partnerships with Scandinavian allies.

Denmark's small size and efficiency would allow it to act as a stabilizing force amid broader chaos.

Canada

Canada would champion international cooperation and humanitarian ethics while leveraging its biotech and medical infrastructure to support vaccine development. Its close alliance with the U.S. would ensure joint security measures, though Canada would likely emphasize diplomacy and transparency over militarization. Domestically, Canada's decentralized healthcare system would focus on community-based containment and indigenous outreach. The government would also work with the UN and WHO to promote equitable resource distribution. Canada's calm, collaborative approach would make it a trusted mediator between major powers, balancing science-driven leadership with empathy.

North Korea

North Korea would respond to the crisis with absolute secrecy and militarized isolation. The regime would seal its borders immediately, deploying the army to enforce lethal quarantines and prevent any external influence. Domestically, propaganda would frame the crisis as a Western plot, while the leadership could exploit the chaos to consolidate control and test bioweapon capabilities. Despite limited healthcare capacity, North Korea might covertly collaborate with China or Russia for aid and research data. Its unpredictable actions and aggressive posturing could pose significant risks to neighboring nations and global stability.

Country Stances

Papua New Guinea

- a. Papua New Guinea would struggle with containment due to limited infrastructure, challenging terrain, and weak healthcare systems. The government would focus on rural isolation strategies, relying on international organizations for medical assistance and supplies. Its vast biodiversity might make it a site for unique antiviral research, drawing global scientific interest. However, internal corruption and logistical difficulties would hinder effective coordination. PNG's role would likely be reactive, centered on securing aid, maintaining stability, and preventing regional spread through Pacific cooperation efforts.

Brazil

- a. Brazil would emphasize self-reliance and rapid mobilization to control domestic chaos. With dense urban populations and a politically divided government, Brazil would face severe challenges managing the outbreak. However, its advanced pharmaceutical industry and agricultural strength would position it as a critical regional supplier of medical goods and food. The government could leverage its role in Latin America to lead containment efforts through Mercosur. Brazil's approach would balance populist rhetoric with scientific pragmatism, though corruption and misinformation could undermine its response.

Indonesia

- a. Indonesia's response would center on mass mobilization, regional coordination, and protection of its vast archipelago. The government would likely impose strict maritime quarantines and rely on its military to enforce control over trade routes and infected zones. With a large population and limited healthcare infrastructure, Indonesia would call for international aid and collaboration through ASEAN. However, political instability and misinformation could hamper coordination. Indonesia's strategic position between the Indian and Pacific Oceans would make it vital for controlling virus movement across Asia.

Philippines

- a. The Philippines would respond with a militarized and centralized approach, relying heavily on its armed forces to enforce quarantine measures. The government would likely invoke emergency powers to maintain order, prioritizing urban containment in densely populated areas. The Philippines' close relationship with the U.S. might provide access to aid and vaccine research, though domestic corruption and inconsistent governance could impede implementation. Public trust would be fragile, forcing the government to balance strict control with humanitarian needs. The country's island geography could help slow transmission, but widespread poverty would make sustained containment difficult.

Republic of Congo

- a. The Republic of Congo would face severe strain due to weak healthcare systems and ongoing political instability. The government would depend heavily on the African Union and international organizations for containment assistance. Rich in natural resources, Congo might use oil and mineral exports as leverage to secure foreign aid. However, internal corruption, misinformation, and limited rural access would hinder an effective response. Despite these challenges, Congo's experience with past outbreaks like Ebola would provide some operational knowledge for setting up quarantine zones and mobilizing public health workers.

India

- a. India would focus on balancing humanitarian outreach with pragmatic containment measures. Given its dense population, India would prioritize strengthening local healthcare systems, securing vaccine supply chains, and maintaining transparency to prevent panic. Its growing pharmaceutical sector would play a major role in global vaccine production, positioning India as both a provider and a negotiator in international aid. The government would also stress regional cooperation within South Asia, though tensions with Pakistan and China could complicate coordination. India's approach would blend science, diplomacy, and moral leadership.

Country Stances

Pakistan

- a. Pakistan's priority would be maintaining security and border integrity amid fears of regional spillover. Its powerful military would take control of containment operations, imposing strict quarantines and protecting critical facilities. However, economic instability and limited healthcare resources would force Pakistan to seek support from China and the UN. Geopolitical tensions with India would persist, as both nations compete for regional influence and vaccine access. Pakistan's strategy would mix defensive militarization with pragmatic diplomacy, seeking to preserve sovereignty while mitigating internal collapse.

Iceland

- a. Iceland would rely on isolation, scientific innovation, and international collaboration to manage the crisis. With its small population and advanced healthcare infrastructure, Iceland could implement comprehensive testing, quarantine, and contact tracing early. The government would also leverage its biotech sector for antiviral research and data sharing with Europe. As a neutral and geographically isolated nation, Iceland could serve as a safe zone for international researchers or medical operations. Its emphasis on transparency and data-driven policy would make it a model for responsible crisis management.

Liberia

- a. Liberia's response would be informed by its past experience with the Ebola outbreak. The government would prioritize early quarantine enforcement, community awareness campaigns, and international cooperation with the WHO and African Union. However, limited infrastructure, economic hardship, and potential political unrest could strain efforts. Liberia would rely heavily on external aid but could emerge as a model for grassroots containment strategies. Its humanitarian focus and experience in crisis coordination would make it a respected voice in African regional discussions.

Canada

- a. Canada maintains that artificial intelligence should be developed and deployed within a framework that upholds human rights, privacy, and accountability. As a nation known for its strong democratic values and leadership in ethical AI research, Canada advocates for international collaboration to establish standardized guidelines for AI governance and transparency. It supports the creation of global regulatory frameworks that ensure AI systems are free from bias and are designed to promote equality and social good. Canada also emphasizes the importance of protecting data privacy and ensuring public trust through open-source research and multi-stakeholder oversight. While promoting innovation, Canada prioritizes the responsible use of AI to strengthen education, healthcare, and climate policy — ensuring that technology remains a tool to empower humanity, not replace it.

Japan

- a. Japan would take a technologically sophisticated and disciplined approach, emphasizing medical innovation and social compliance. The government would deploy AI systems for contact tracing and mobilize biotech firms to develop antiviral treatments. Japan's strong healthcare infrastructure would allow rapid containment, though its dense urban centers pose significant risk. Internationally, Japan would promote cooperation through the G7 while balancing tensions with China and Korea. Its leadership in technological solutions would make it central to global research coordination and vaccine distribution.

Country Stances

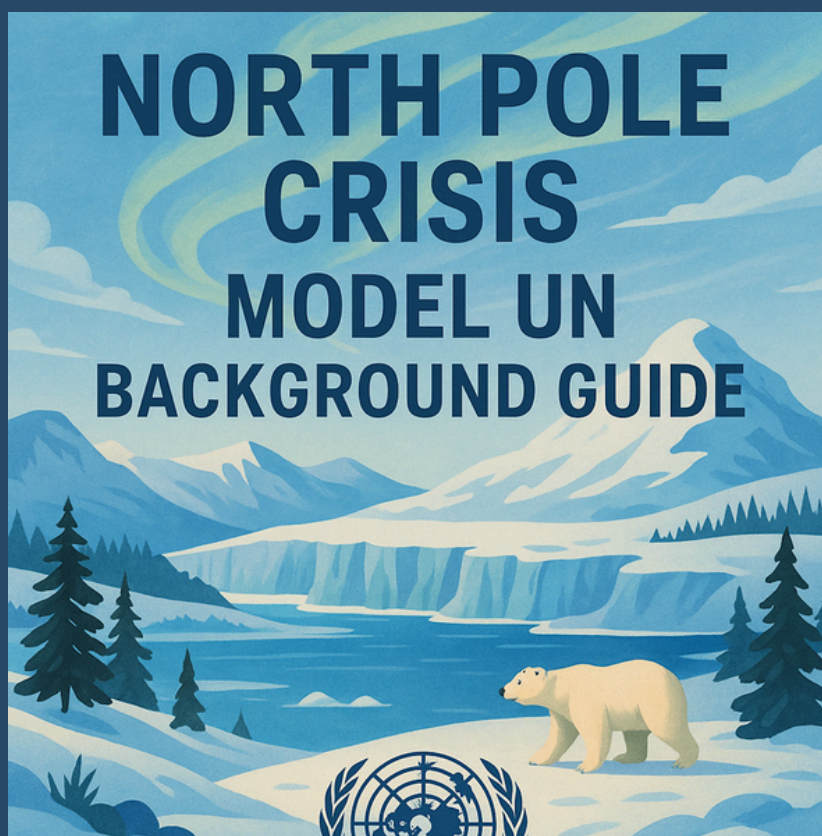
Spain

- a. Spain would advocate for a unified European response centered on public health and humanitarian relief. With a strong medical system but economic vulnerabilities, Spain would rely on EU coordination for vaccine access and containment strategies. It would also face pressure managing refugee and migrant flows from North Africa, testing its border control capacity. Domestically, Spain's decentralized governance could cause tension between national and regional authorities. Nonetheless, Spain's focus on transparency, cooperation, and shared European solidarity would make it a crucial mediator in the continent's response.

1.

Australia

- a. Australia would adopt a pragmatic, defense-oriented approach, using its geographic isolation and strong military to secure borders and protect domestic stability. Its advanced research institutions would partner with allies like the U.S. and U.K. to accelerate vaccine development. Domestically, Australia would establish strict quarantines and redirect resources toward biocontainment and public safety. The government's coordination with Pacific neighbors would be essential in preventing regional spread. Internationally, Australia would act as a stabilizing force in the Indo-Pacific, balancing humanitarian leadership with national security.



Questions to Consider

1. Should the North Pole be recognized by the United Nations? What role will it play in international politics? Should it be subject to international law?
2. Given Santa's alleged use of unauthorized global surveillance, how should states balance privacy rights with the intelligence value this system might provide?
3. Can Santa's behavioral database (naughty and nice lists) be considered a breach of international data protection laws or is it too advanced to regulate?
4. Santa's behavioral database collects unauthorized global surveillance data—should the international community dismantle it, regulate it, or attempt to harness it?

